


Using the "Forgotten Password" function

If you already have an account for the ENETS website but you don't know the password anymore, you can use this function.

If you cannot log into your account anymore please use the "Forgotten Password" function

Please click on "Forgotten password?"



The image shows a login form with two input fields: "Username" and "Password". To the right of the "Password" field is a blue button with a right-pointing arrow. Below the input fields are two links: "Not a member?" and "Forgotten password?". The "Forgotten password?" link is highlighted with a red rounded rectangle.

Please fill in your e-mail address that you have used for your account

Please click on "Send".

Lost your password?

To create a new password for your account, please enter the email address associated with your account.

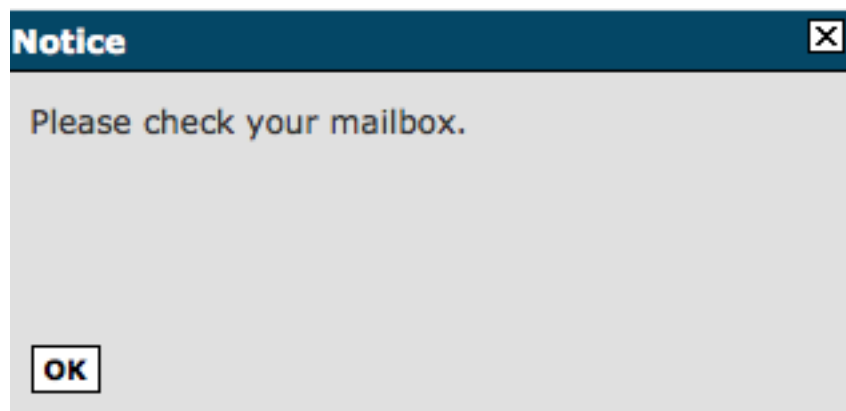
If you can't access this email address anymore, [contact us](#), so that we can assist you.

*Your email

Send

Required fields are shown with *

You will get a message that you have to check your mailbox



The e-mail you get contains the following link. Please click on that link.

For safety reasons the link is a one-time link. If it does not work anymore you have to start again.

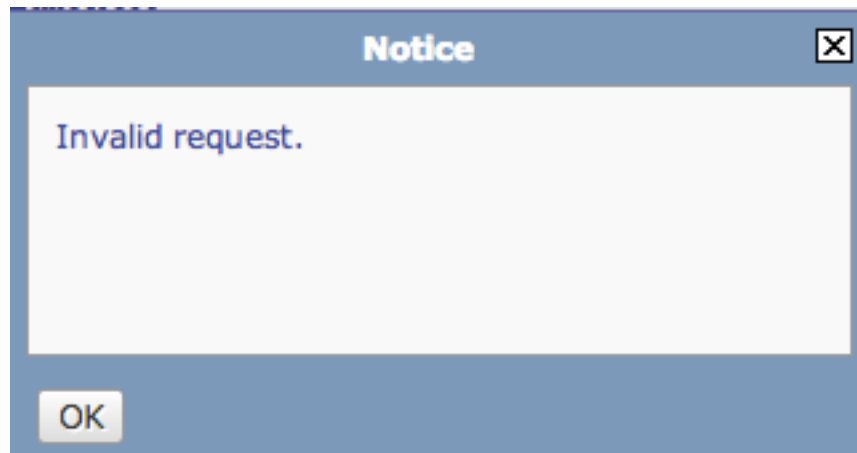
Please visit the following link to set a new password:

http://www.enets.org/index.php?req_pass=3rf6892e94c5bc2815be6a89fb65ab69ef

This is a one-time link, so it can be used only once.

If clicking the link above does not work, copy and paste the URL in a new browser window instead.

If this message appears please click ok



You will be led to the ENETS website again.

Please enter your new password twice and click on "Save".

Change your password

*New password

*Confirm password

Save

Required fields are shown with *

Finally you get a message that your password is changed

